

Port of Rotterdam Hinterland Projects

Subtitel
By : Donald Baan
Antwerpen, 11 June 2009

Contents

- Introduction Port of Rotterdam
- Company mission and targets
- Tools & Challenges
- Projects

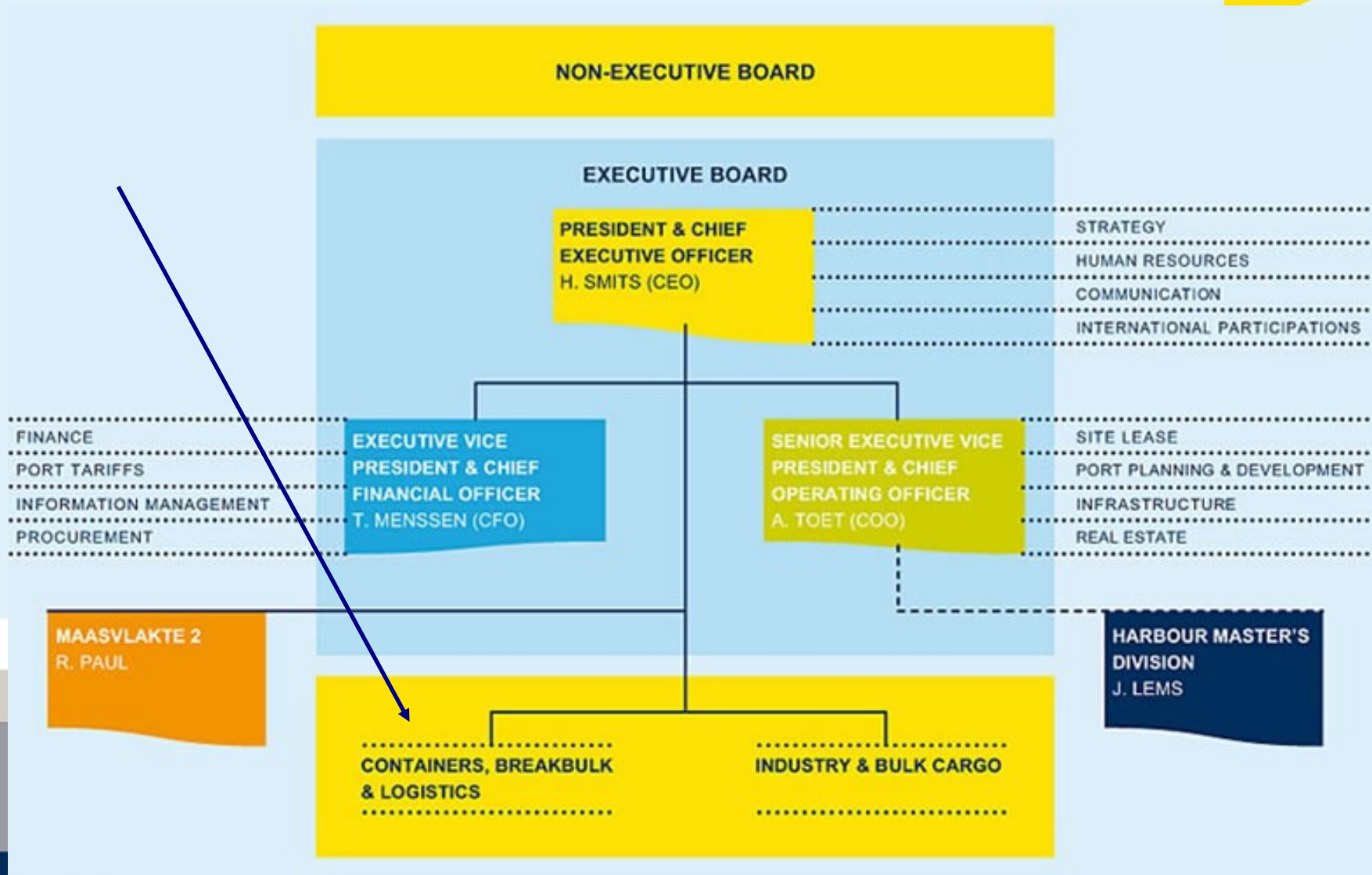
Contents

- Introduction Port of Rotterdam
- Company mission and targets
- Tools & Challenges
- Projects

History

- Rotterdam Municipal Port Authority 1932 – 2004
 - Department of City of Rotterdam
 - Focus on public tasks (safety, infrastructure, employment)
- Port of Rotterdam Authority 2004 – current
 - Shareholders : City of Rotterdam (75%) and National Government (25%)
 - Focus on port exploitation and expansion

Company structure



Business Model

- Port of Rotterdam (PoR)
 - Manager, operator, constructor and developer of port and industrial complex in Rotterdam
 - Effective, safe and efficient handling of shipping
 - Port Management (e.g. Port of Sohar in Oman)
- Landleasing (11,000 hectares) Eur. 250 mio
- Portdues (89 kilometres of quay) Eur. 250 mio

Responsibility

Private business

PoR



Contents

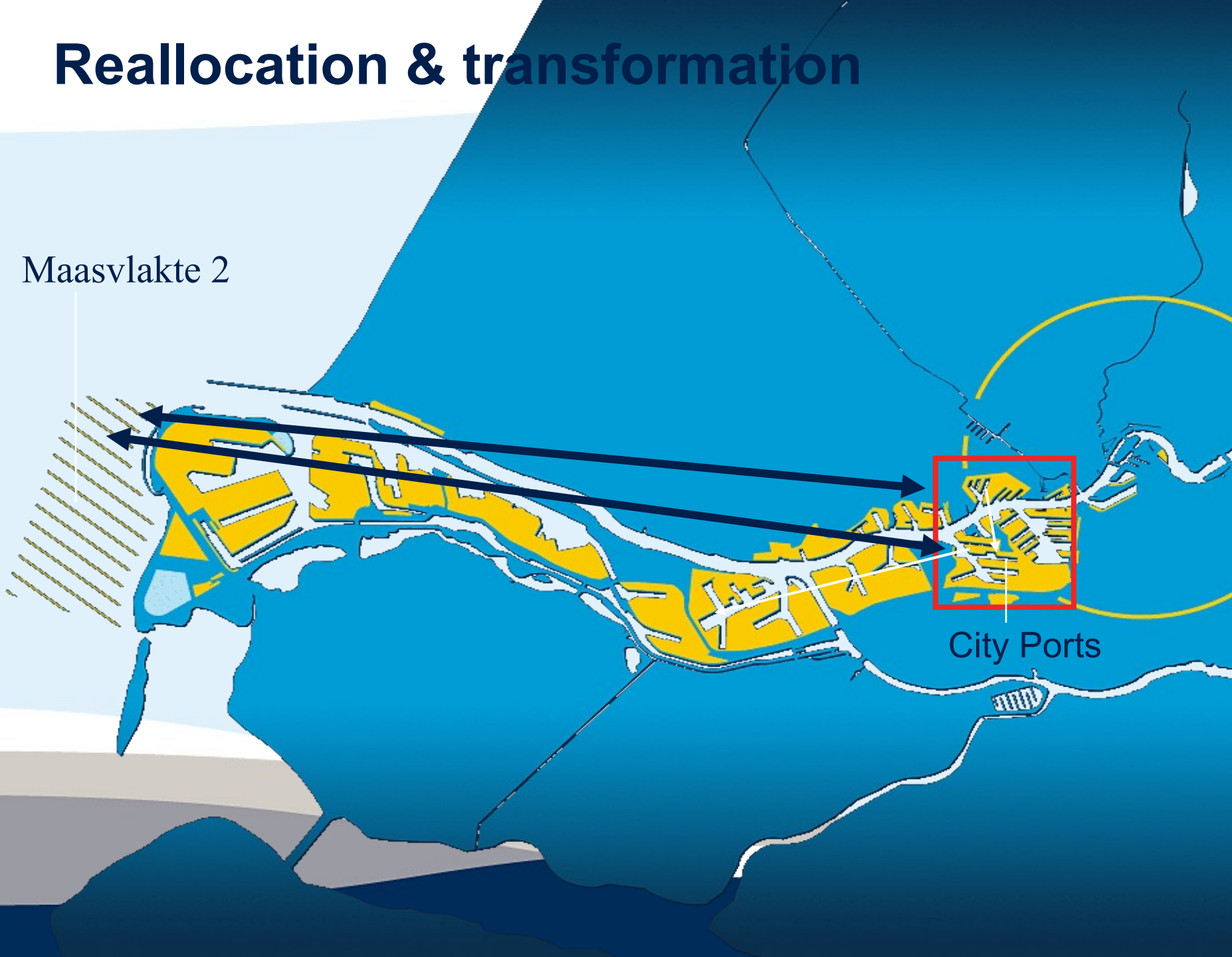
- Introduction Port of Rotterdam
- Company mission and targets
- Tools & Challenges
- Projects

Mission

- To develop, in partnership, the European world class port.
- Three main themes :
 - sustainability
 - accessibility
 - space

Reallocation & transformation

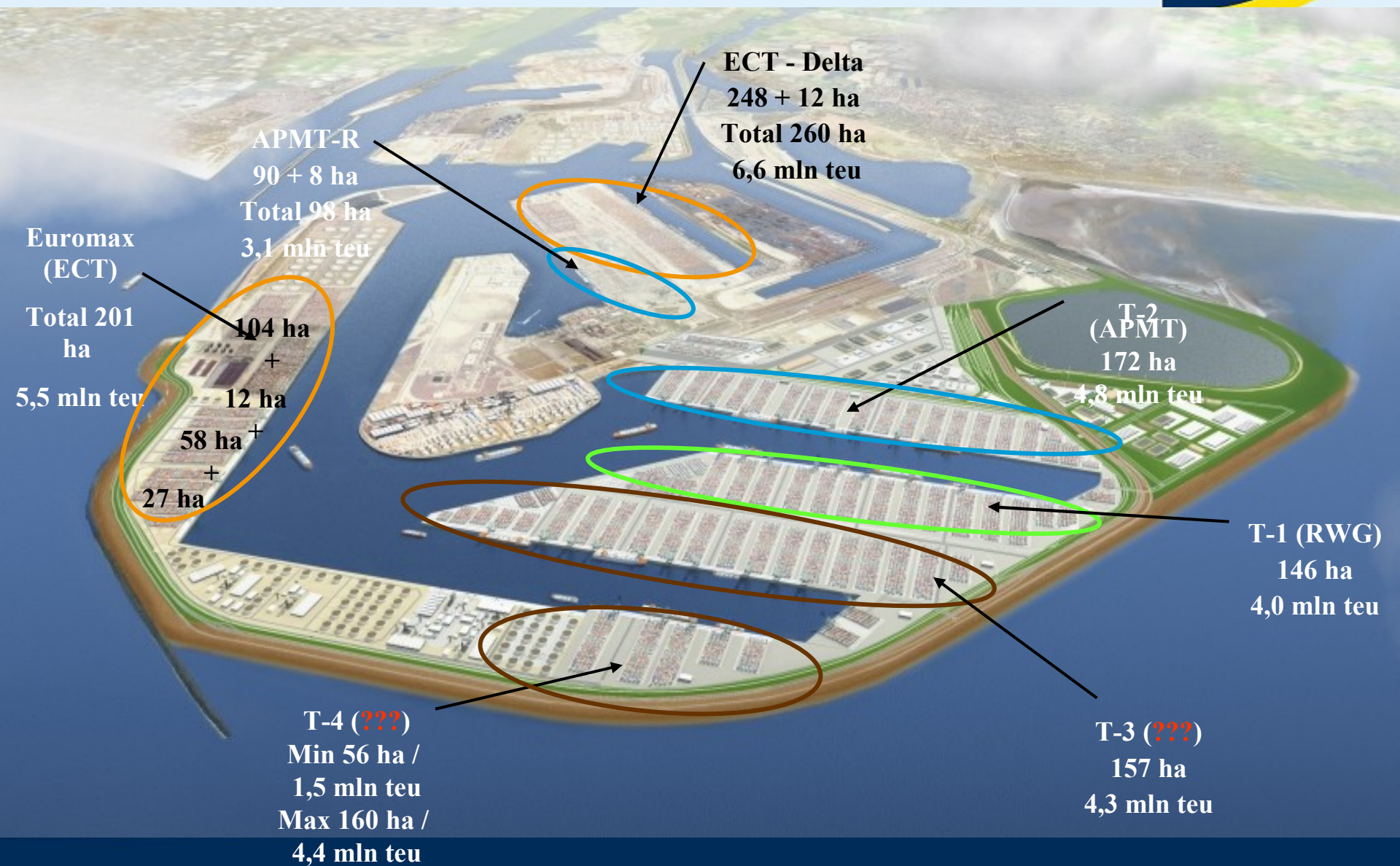
Maasvlakte 2



City Ports

Container terminals in Rotterdam

Development at “Maasvlakte 1 and 2”



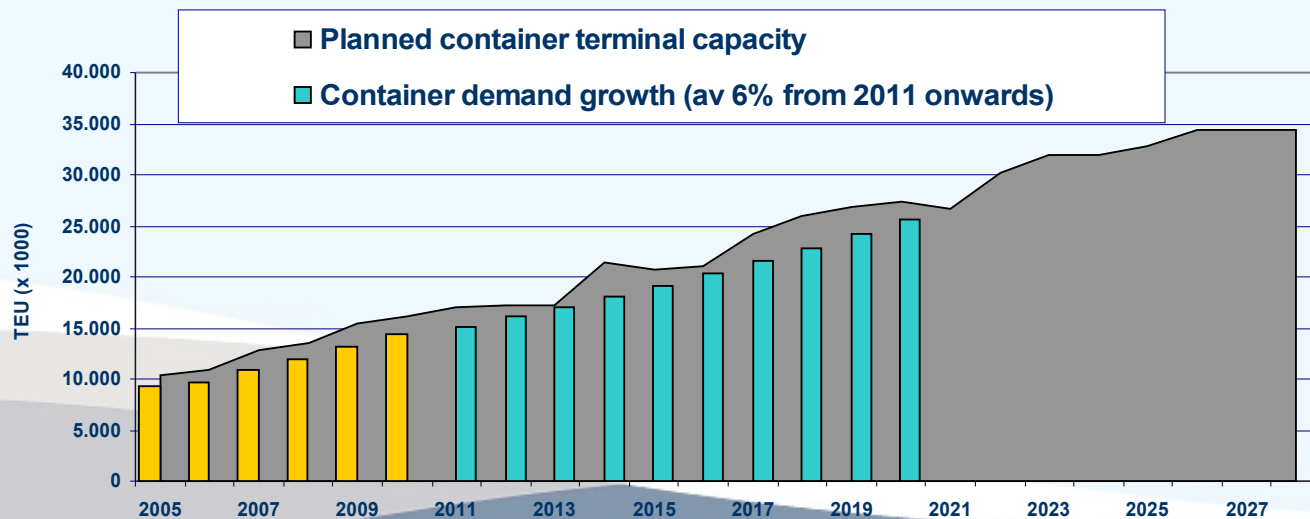
Space Growth Expectations Rotterdam

Total throughput

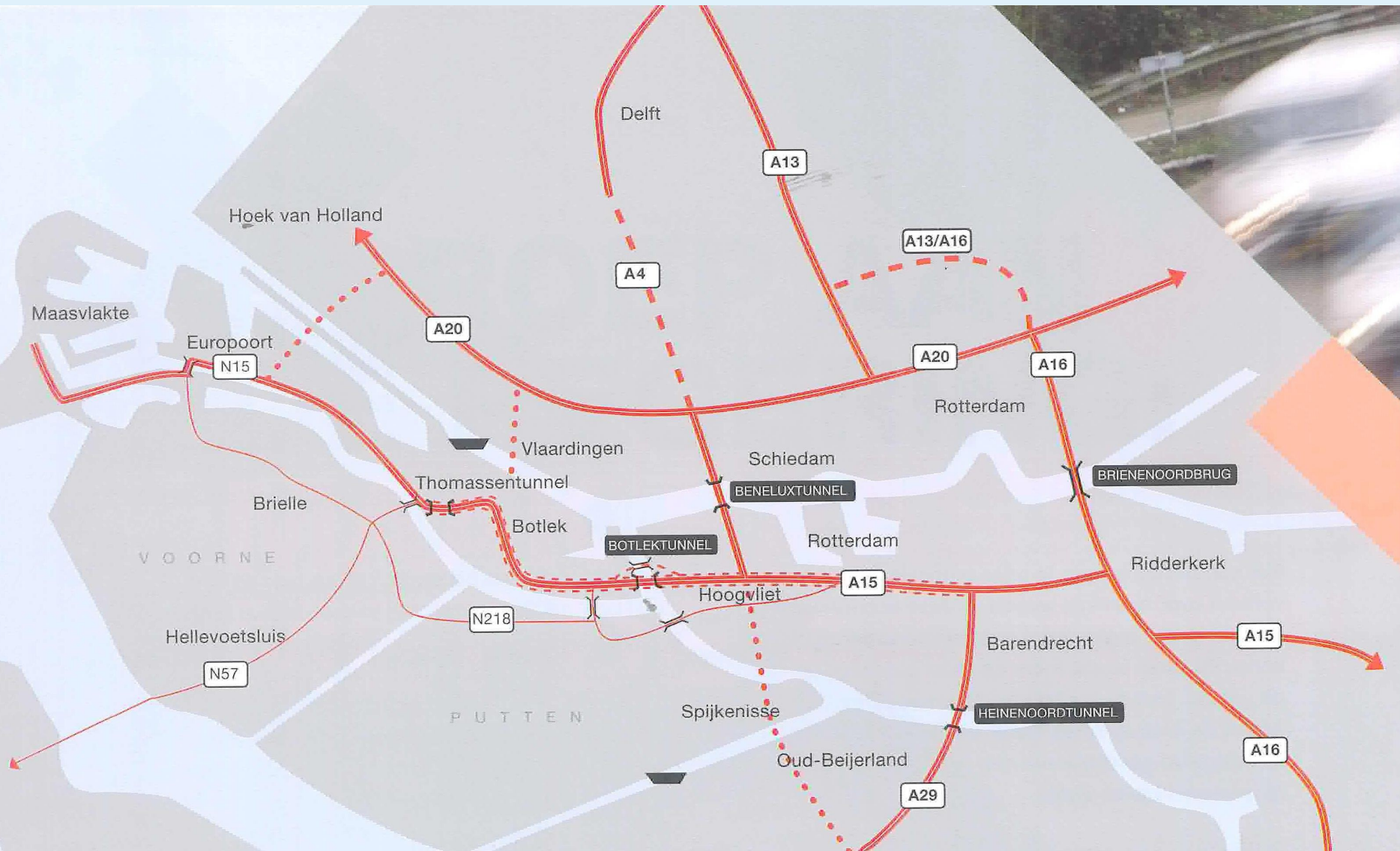
2007 407 million tons
2008 420 million tons
(+2,7%)
2030 **800 million tons**

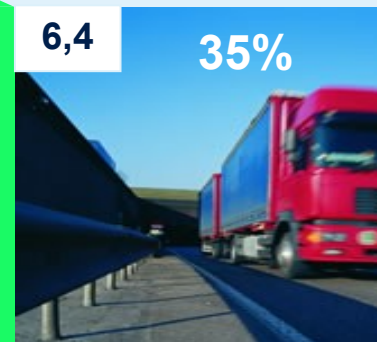
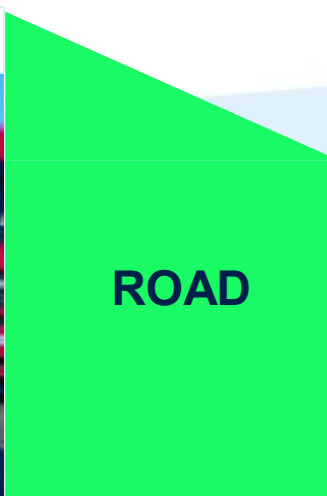
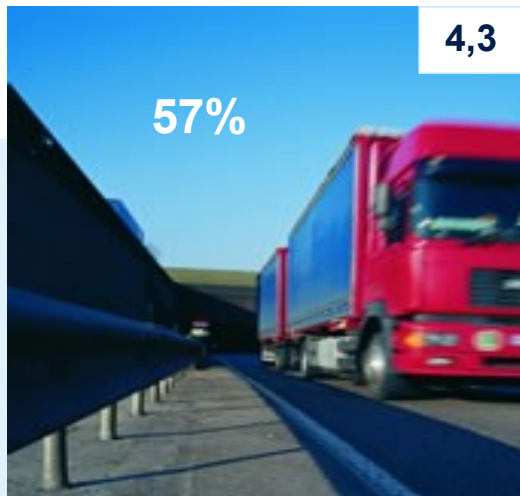
Container throughput

2007 10.8 million TEU
2008 10.8 million TEU
2015 **20** million TEU
2030 **30** million TEU



Vulnerability A15 corridor





Containers Maasvlakte

2008



2035

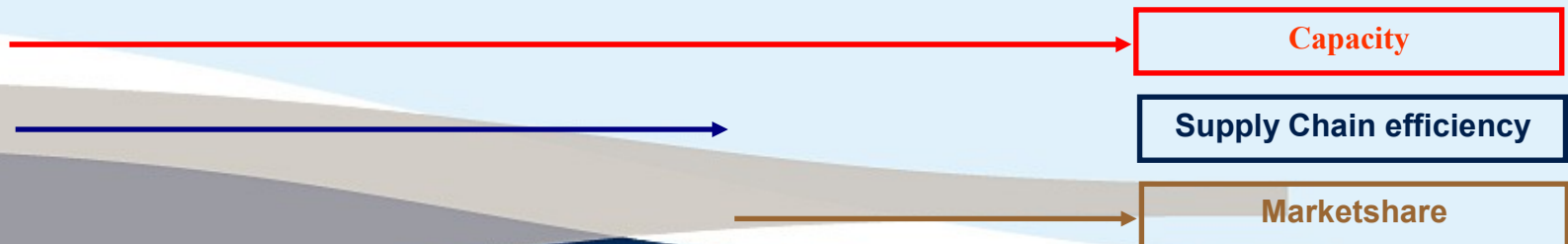
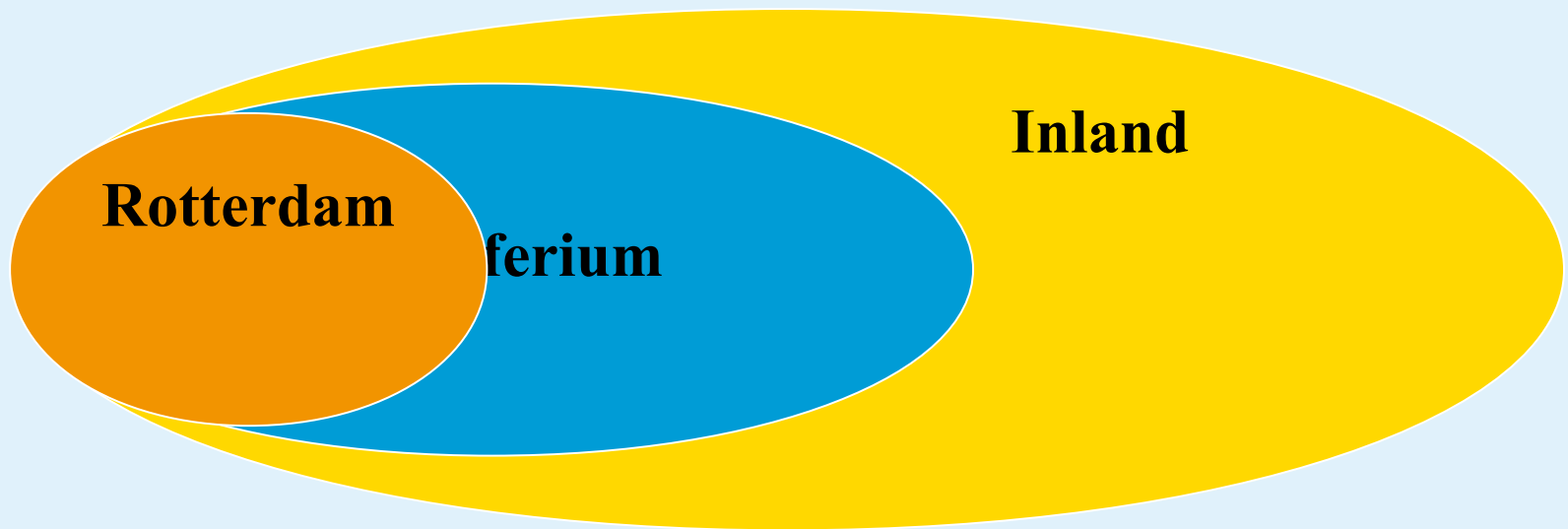


* mln TEU

Team Logistics

- Targets :
 - Modal split (45% barge, 20% rail)
 - Supply Chain Efficiency (leadtime container in port)
 - Marketshare (Hamburg – Le Havre range)
- Business area's :
 - Inland transport (terminals, operators)
 - Distribution
 - Customs and inspections
 - Shippers, forwarders, logistic service providers

Business Area Logistics



Contents

- Introduction Port of Rotterdam
- Company mission and targets
- **Tools & Challenges**
- Projects

Tools Port of Rotterdam (1)

PRICING / CONTRACT

- Port dues
- Landlease / concessions port area
- Landposition in Wanssum, Alphen a/d Rijn

PARTICIPATIONS

- Verkeersonderneming (33%) – Traffic Management A15
- Keyrail (35%) – Infrastructure Management Betuwe
- Portbase (75%) – Port Community System

Tools Port of Rotterdam (2)

LOBBY

- Political support (Masterplan Guter Verkehr, local initiatives, EU)

PUBLIC CO-OPERATION

- Close co-operation with surrounding cities/towns
- Container Transferium

Challenges

- Current economic downturn
- Lack of reliable market information
- Develop inland capacity at same pace at MV2
- Future scanning of intermodal containers
- Absence of contract relation between deepsea terminal & barge/rail operators
- Mental shift shipping lines, forwarders, shippers !

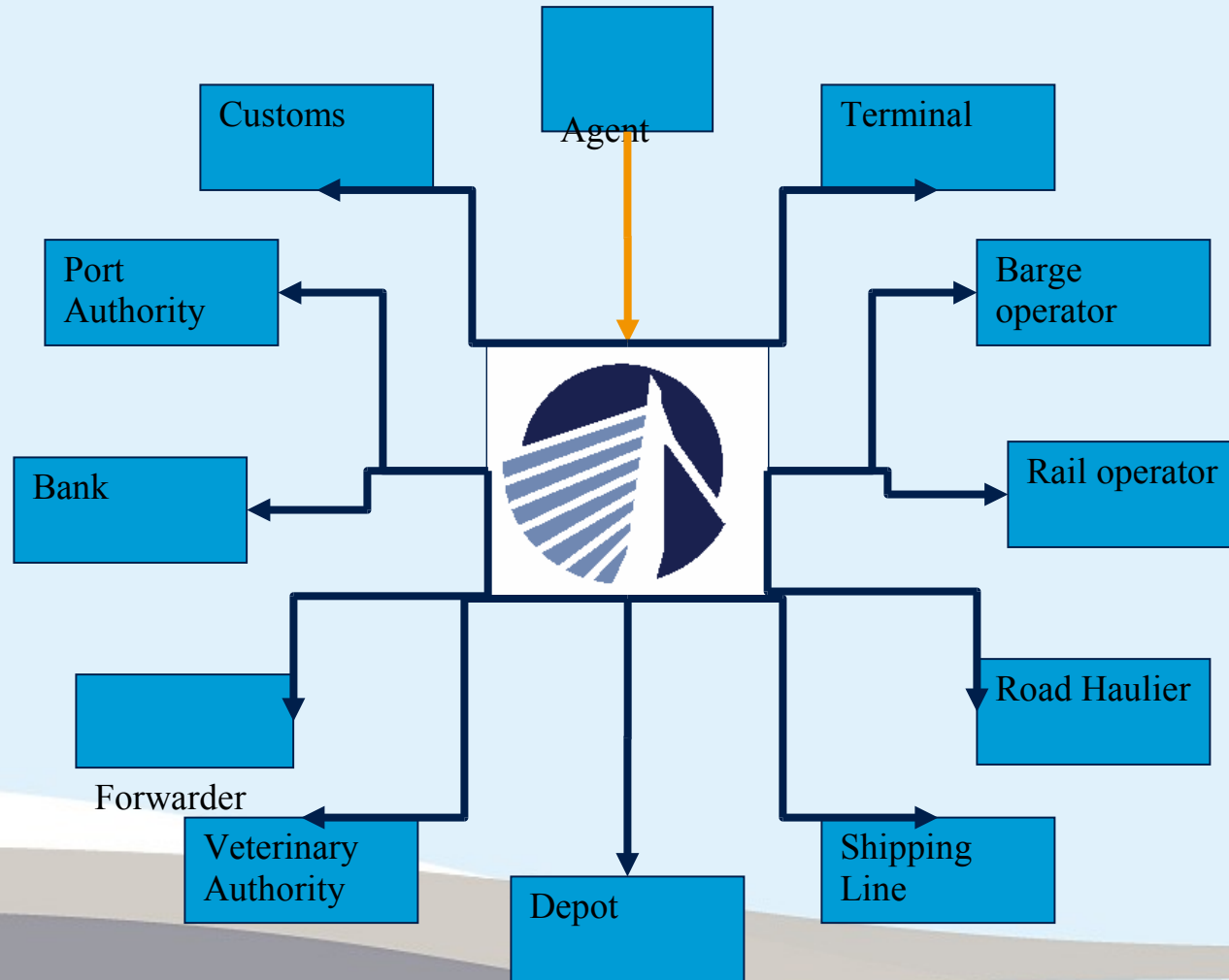
Contents

- Introduction Port of Rotterdam
- Company mission and targets
- Tools & Challenges
- **Projects**

Current projects in Rotterdam

- Capacity :
 - Dedicated on-dock rail/barge facilities
 - Common Rail Terminal / Barge Service Center
- Quality :
 - Port Community System (planningtools barge&rail)
 - Modal split guarantee in terminal concessions MV2
 - In-port Transferia (Botlek & Waalhaven)
 - Etc...

Port Community System



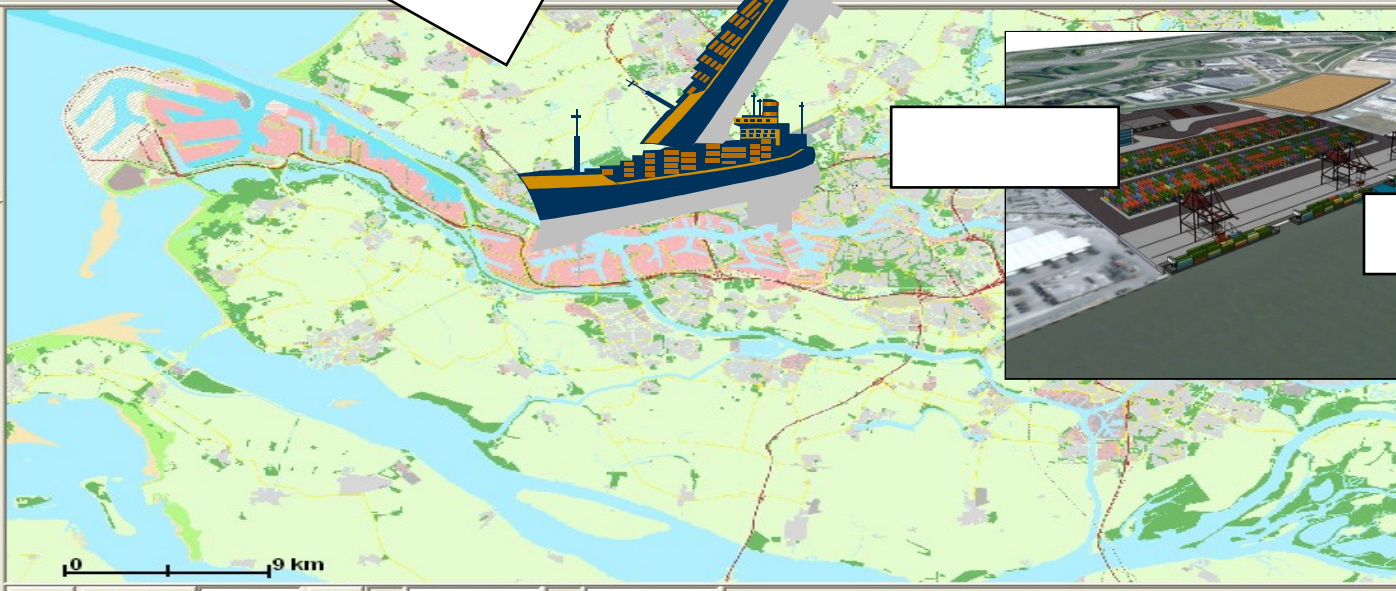
Project Container Transferium


RIV; MEERR in database: P9RIV

Bestand Bewerken Venster Help Zoekvraag Voorkeuren Selecteren Beeld Raadplegen Meten

RIVSTART - RIV startscherm

Er zijn geen objecten geselecteerd met bijbehorende gegevens





Objectgegevens

Object	
Externe code	
Laag	
Hoefv.	

FRM-40401: geen wijzigingen om op te slaan.

start

Inbox - Micros... Presentatie4 Documenten 4 Internet Ex... NL

13:51

Inland Terminals

Extended gate



Current projects inland terminals

- Netherlands
 - Capacity : landlord in Wanssum and Alphen a/d Rijn
 - Focus on increased capacity (modal split) and supply chain efficiency. Relocation distribution and empty depot functions.
- Europe
 - Focus on potential role in Duisburg and Czech Republic (as landlord, together with partners) to increase marketshare
- Common goal : establish network of 'Rotterdam Inland Ports', offering high quality services (performance, safety&security, IT, customs status)

Conclusion

The mission is huge but not impossible !

Extended Gate concept helps, but more is needed...

Now is the time for action, and co-operation is key

- Vertical (various partners in supply chain)
- Horizontal (between ports) ?

Thank you for your attention !

