



DEVELOPMENT OF TRANSPORT LINKS IN ESTONIA

Eero Pärasmäe
Head of the Foreign Funding Department
June 2007







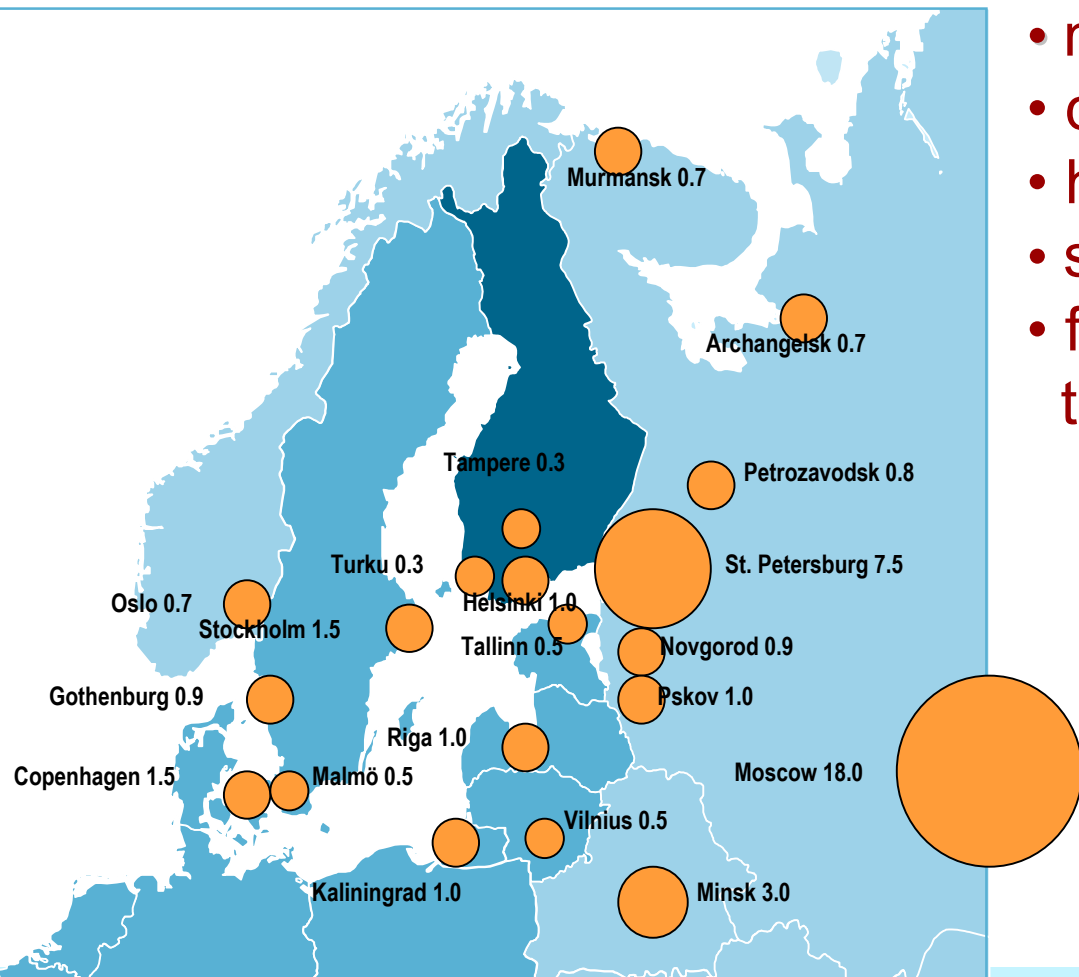
MINISTRY OF
ECONOMIC AFFAIRS AND
COMMUNICATIONS

Estonia: Doing Business in the Baltic Sea Region

- manufacturing base
- distribution centre
- high tech research
- service centre
- for expanding into the markets of

**Northern Europe
Western Russia**

**direct access to
80 mln consumers**





The main objectives of the Estonian national transport policy:

- To provide faster, cheaper and safer transport connection - Accessibility
- To reach balance and narrow development differences between economically stronger and weaker regions of the country – Regional aspect



Overall objectives

- Developing TEN-T network by providing better connections between transport corridors and better access to ports.
- Creating more favourable conditions for the development of international freight traffic and helping improve Estonia's competitiveness.



- Transport Development Plan foresees integrated approach for transport networks and enforcement of intermodality
- Our aim is to take advantage of the strengths of every mode and to create synergy between modes thus creating a flexible system for all kind of economic needs
- While developing transport networks, socio-economic aspects are taken into account
- Example: Logistical Center at Muuga port
 - ✓ preparations to extend the range of cargo (RoRo, ConRo)
 - ✓ development of the connections (rail, road) to TEN network





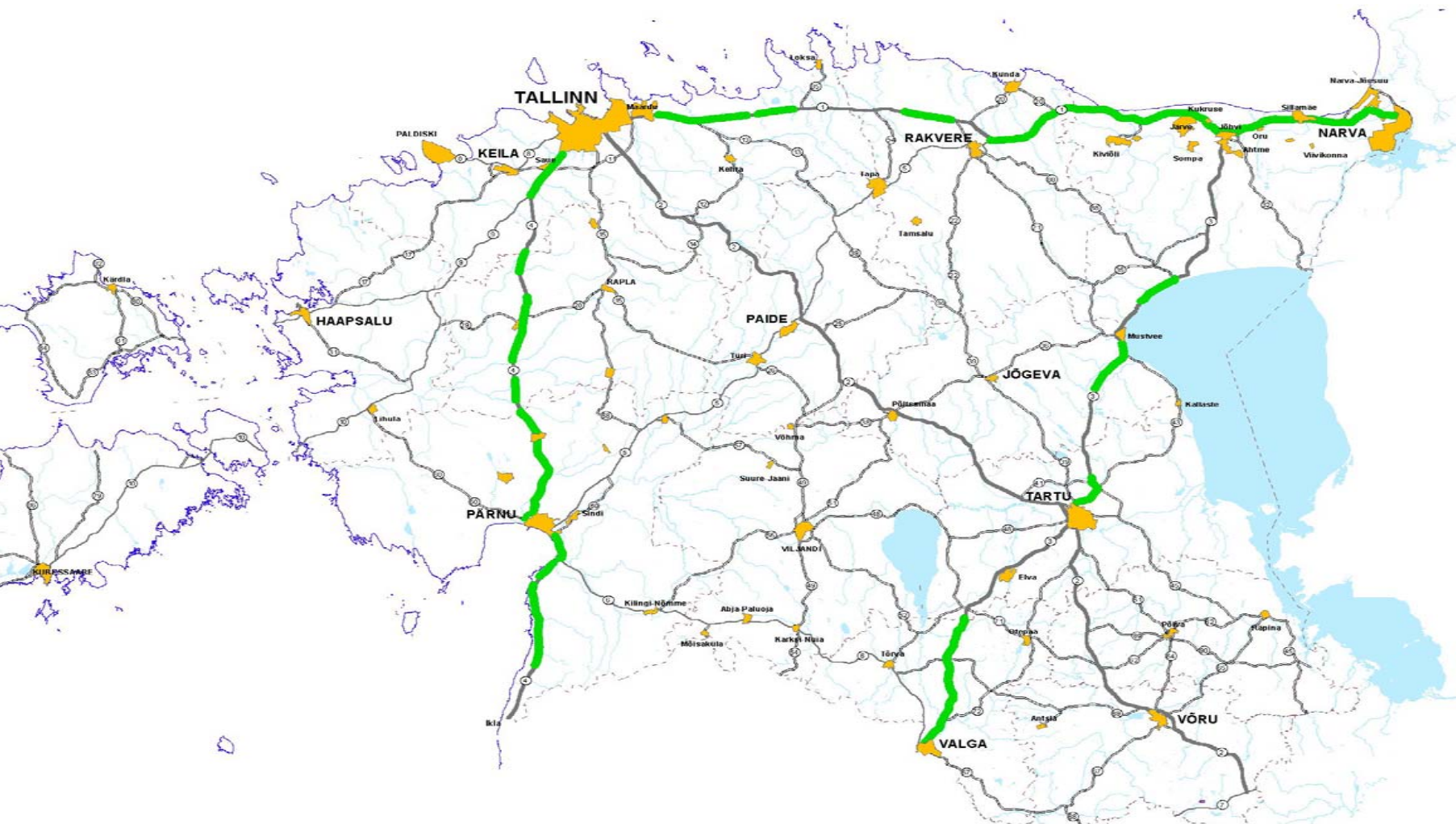
Volume of CF and ERDF for Estonian transport sector

in euros

| Period | ERDF | CF |
|-----------|---------|---------|
| 2004-2006 | 26 mln | 149 mln |
| 2007-2013 | 120 mln | 525 mln |



TEN-T road projects 2002-2006





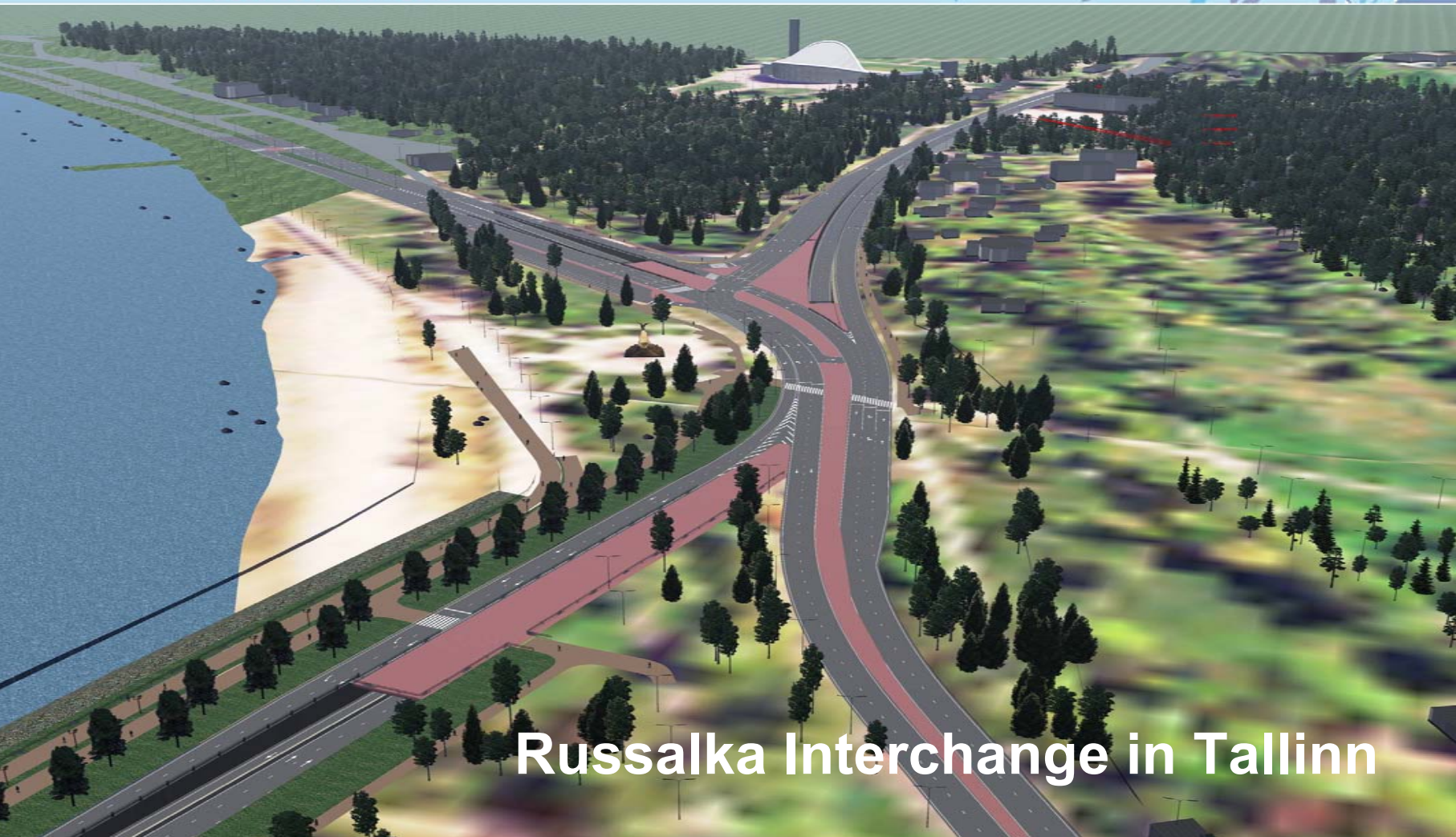
TEN-T road projects in numbers

- Via Baltica I: Ikla-Tallinn-Narva Reh 120,6 km – 2002
- Via Baltica II: Ikla-Tallinn-Narva Reh 120,4 km - 2003/2004
- E20 Maardu-Valgejõe Reh 62,7 km - 2004/2005
- T-3 Jõhvi-Tartu-Valga Reh 82,6 km – 2005
- E20 Kukruse-Jõhvi Rec 6,0 km - 2006



Road bottlenecks concerning Port of Tallinn

- Tallinn-Narva road in Vão-Maardu section
- Russalka interchange connecting Tallinn-Narva road with Port of Tallinn (link to TEN-T)
- Tallinn Ringroad (TEN-T)
- Rail Baltica
- Koidula Border Station
- Narva bridge (E20)



Russalka Interchange in Tallinn



New road link to TEN-T



DESIGNER **BCIOM**
SOCIÉTÉ FRANÇAISE D'INGÉNÉRIE

ETP GROUP

Hendriksen & Ko

DESIGNED
M. Kolossov

CHECKED
D. Amor

APPROVED
A. Jacobson

APPROVED
W. Augsburg

CLIENT Ministry of Finance / Rahandusministeerium PROJECT NO. 132

PROJECT Technical Assistance for Mainland Connections of Corridor No. 1 at Tallinn, Estonia / Tehniline Abi sadamate maastöödenduste rekonstrueerimiseks ja ehitamiseks Tallinnas

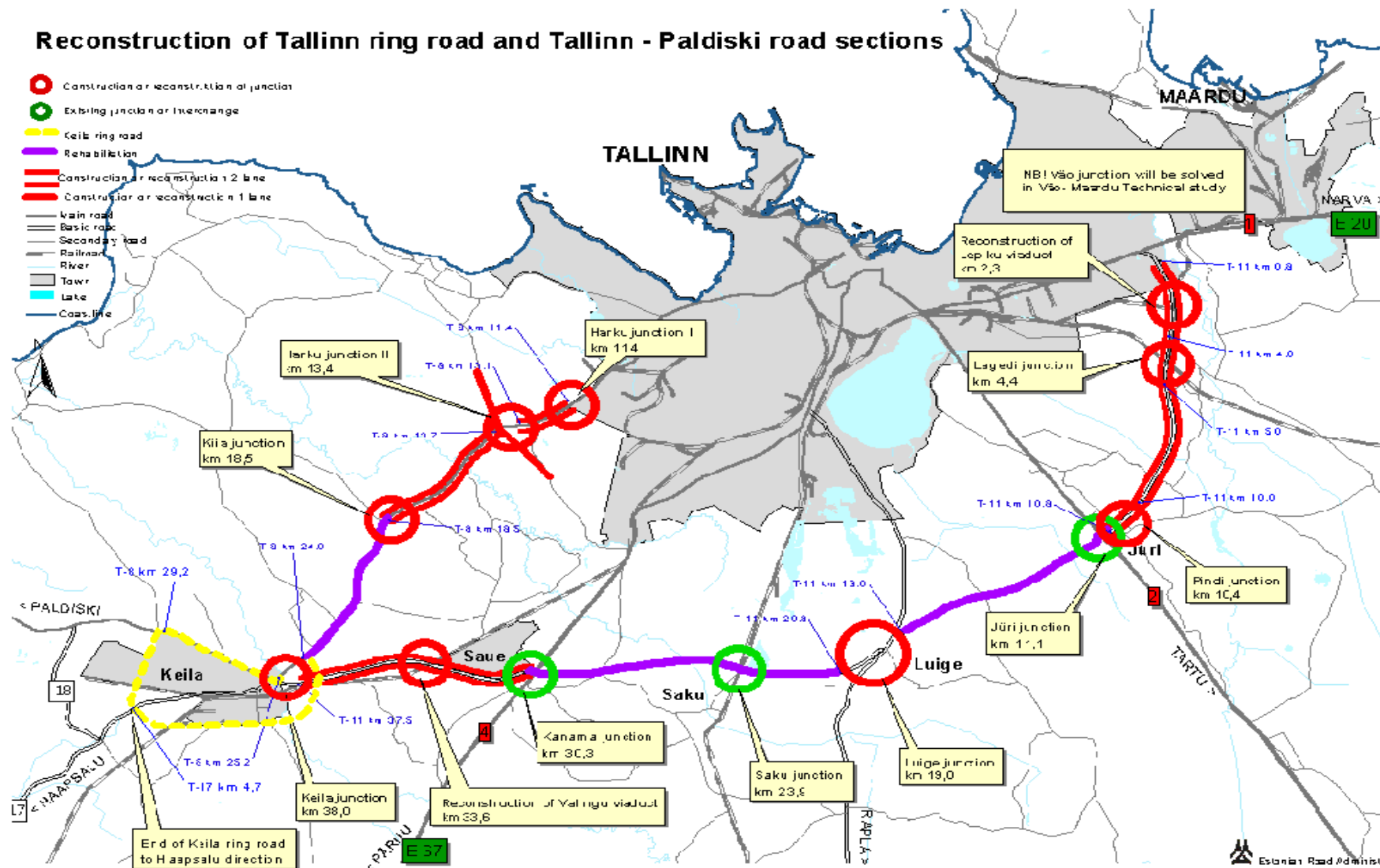
OBJECT E1 Eastern Corridor (Northern Passage) / E1 kiasuunaline koridor (Põhijärg)

DRAWING NAME



Reconstruction of Tallinn ring road and Tallinn - Paldiski road sections

- Construction or reconstruction of junction
- Existing junction or interchange
- Keila ring road
- Rehabilitation
- Construction or reconstruction 2 lane
- Construction or reconstruction 1 lane
- Main road
- Basic road
- Secondary road
- Railroad
- River
- Tower
- Lake
- Coast line



Väo-Maardu interchange (E20)





Benefits

- Improving access to Ports
- Allowing to pass more commodity flows
- Improving traffic safety
- Improving access with TEN-T corridors connecting to Europe and Russia by land



Railway bottlenecks

Rail Baltica: Tallinn-Tartu-Valga

- Improve Rail infrastructure and speed up to 120 km/h
- To assure high-quality rail connection with baltic states, poland and other EU countries through Varssawa
- To increase freight rail transportation to south

Koidula Border Station

- To increase freight rail transportation from and to Russia

PAN-EUROPEAN NETWORK RAIL NETWORK

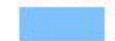


Corridor Alignment



Danube

Pan-European Transport Areas



Barents Euro-Arctic

Black Sea basin



Adriatic/Ionian Sea



Mediterranean basin



TEN and TINA Network



Cities (> than 1,000,000 inhab.)



Rivers, Sea



National boundaries



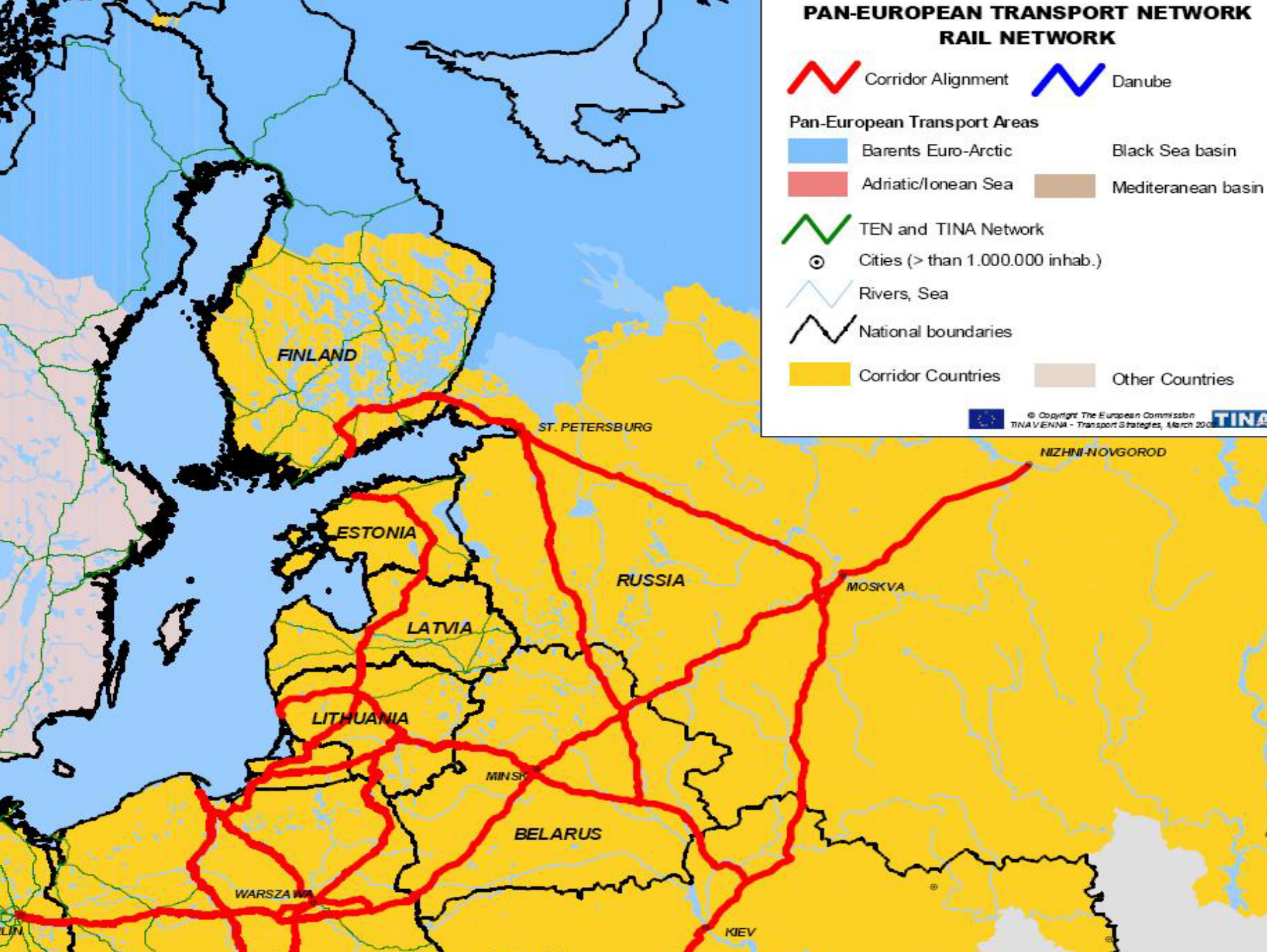
Corridor Countries



Other Countries



© Copyright The European Commission
TINA V ENNA - Transport Strategies, March 2000





QUESTIONS?

Contact:

- Estonian Ministry of Economic Affairs and Communications
- E-mail: eero.pargmae@mkm.ee
- Phone: +3726256378