



**PORT OF TALLINN**  
the port that ships love





# Port of Tallinn

Overview of Activities

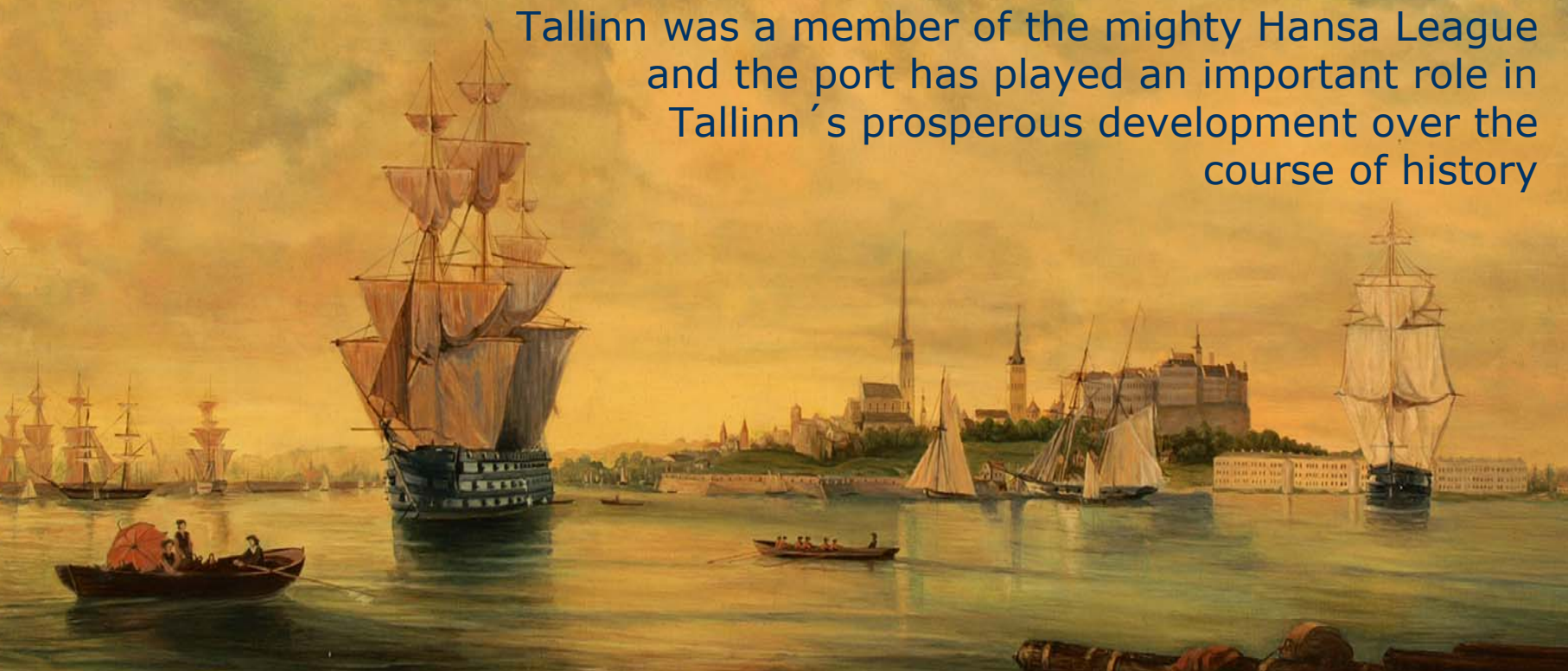
Sven Ratassepp

Public Relations Manager

# An old saying goes: Reval has been built on salt

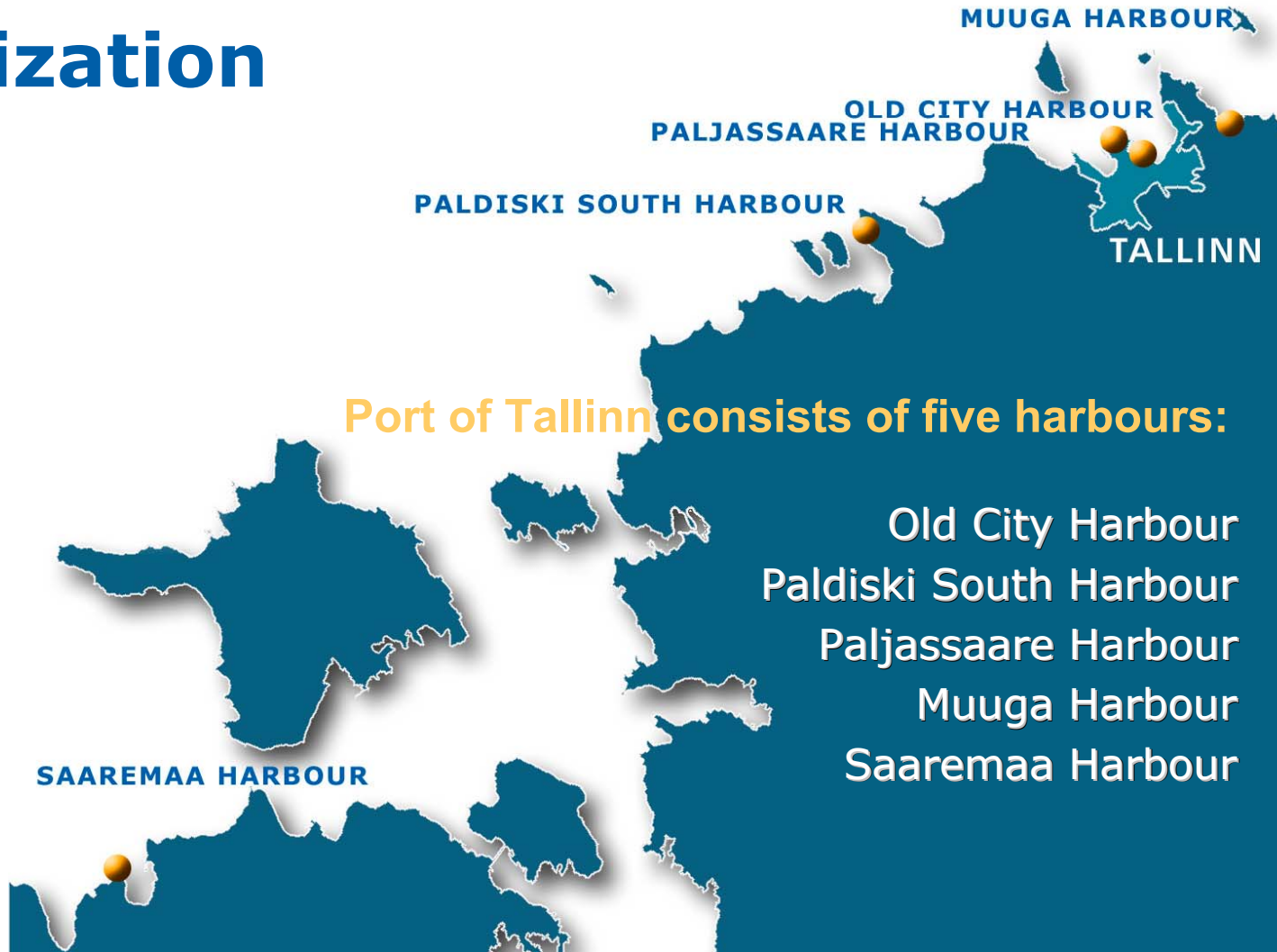
Tallinn was first mentioned in 1154.

Tallinn was a member of the mighty Hansa League  
and the port has played an important role in  
Tallinn's prosperous development over the  
course of history





# Organization



Port of Tallinn consists of five harbours:

Old City Harbour  
Paldiski South Harbour  
Paljassaare Harbour  
Muuga Harbour  
Saaremaa Harbour



# Organization

- Port of Tallinn is a state-owned limited liability company.
- Port of Tallinn is a landlord port.
- Landlord provides the infrastructure – land, quays and sea approaches.
- Private operators provide the superstructure – handling equipment and warehousing.

# Results 2006

41,3 mln tonnes of cargo

152 000 TEU containers

6,76 mln passengers

3,043 cargo ship calls

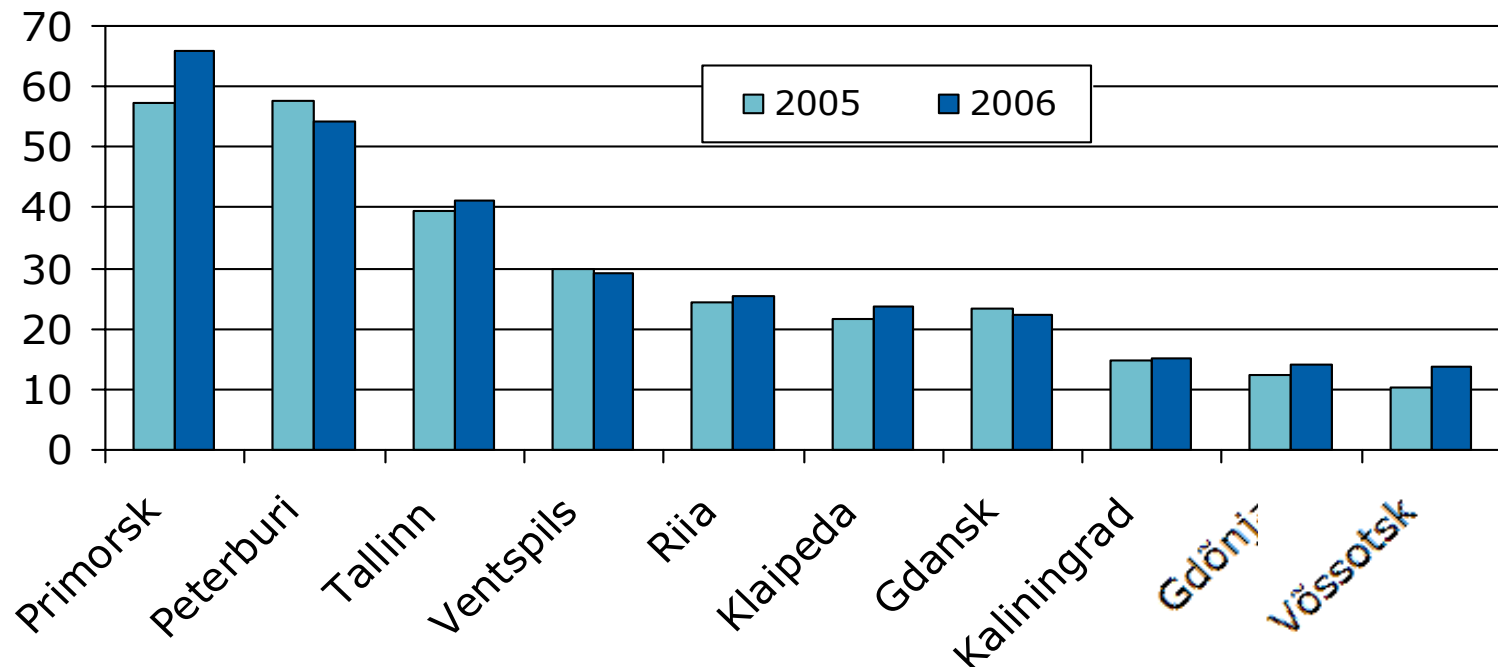
8,683 passenger ship calls

292 cruise ship calls



# Market share 2005-2006

Ports of the Eastern shore of Baltic Sea (million ton)







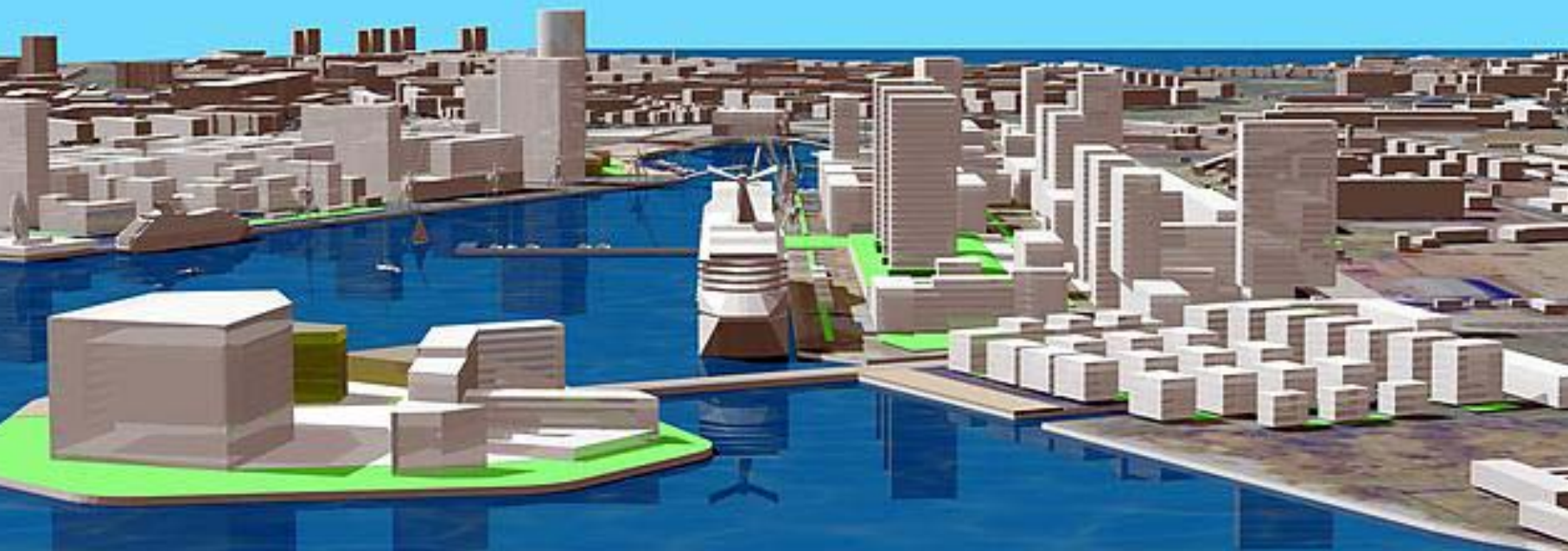
# Paljassaare Harbour







# Paljassaare development



# Paldiski South Harbour

for Cargo and Passenger Vessels



**Development plans 2006 - 2011**



# Muuga Harbour construction in 1985



3 5 85



# Muuga Harbour in 1994







# Muuga Harbour

for Cargo Vessels



- Territory: 476.3 ha
- Aquatory: 752 ha
- Total length of berths: 5.9 km
- Number of berths: 28
- Max. depth: 18 m
- Max length of a vessel: 300+ m

An aerial photograph of the Muuga Harbour area. The image shows a large body of water (the harbour) with a prominent white 'E' shape overlaid on it, indicating a planned development or dredging project. To the left of the water, there is a large green field with white lines, possibly a sports field or a planned park area. The surrounding land is a mix of forested areas and some industrial or construction sites. The sky is clear and blue.

# Muuga Harbour development plan

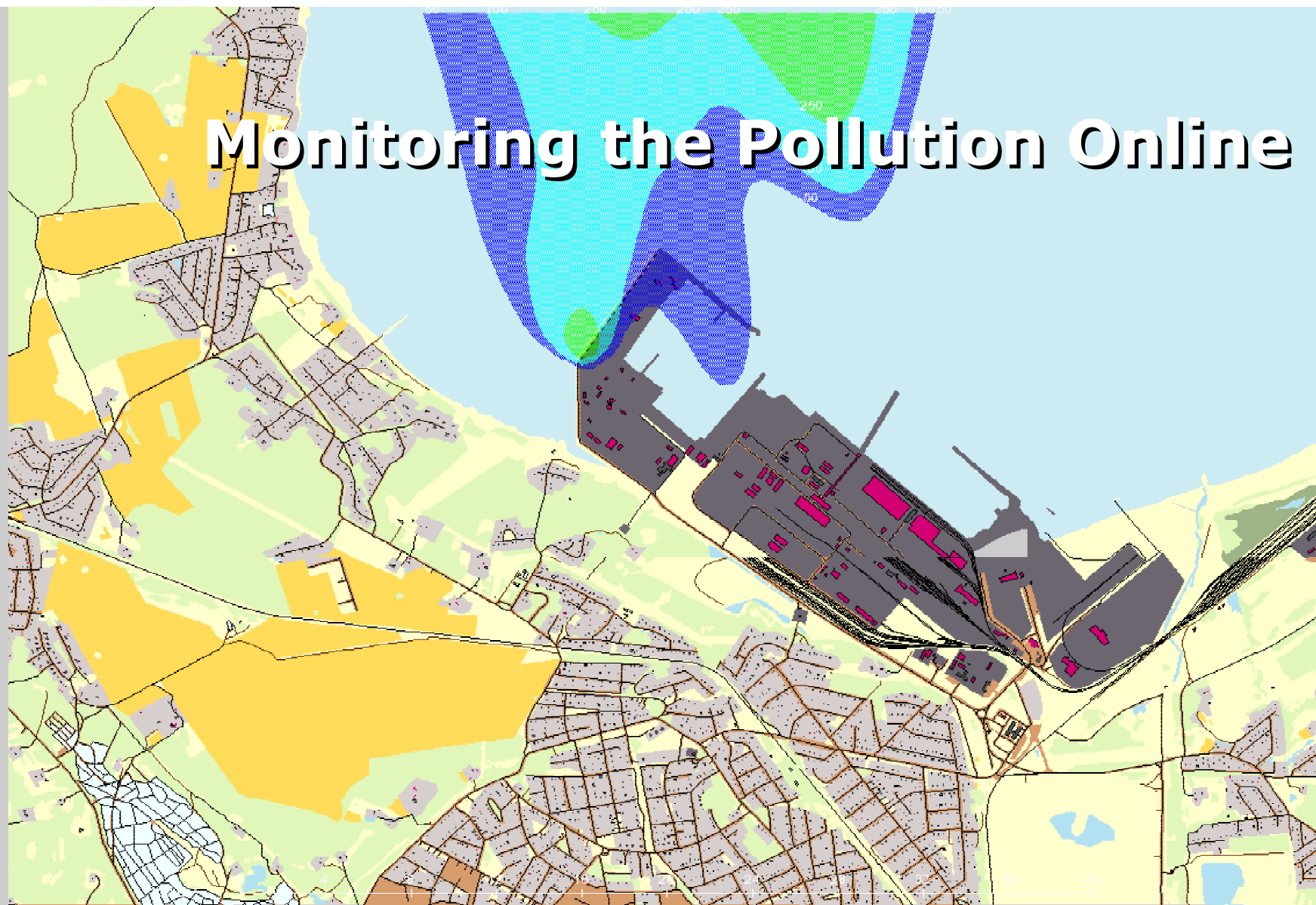
**2006-2011**

**Total investment 200 million EUR**



µg/m<sup>3</sup>  
> 5000  
2000  
1000  
500  
250  
100  
50

# Monitoring the Pollution Online



# Saaremaa Harbour



- Accommodating vessels up to 200m long
- Depth of 10 m
- Full range of harbour services rendered
- Operational since May 19, 2006





# Old City Harbour

for Passenger and Cruise Vessels



## Characteristics:

- Territory: 54.2 ha
- Aquatory: 75.9 ha
- Max. depth: 10.7m
- Max. length of a vessel: 300+ m
- Number of berths: 23
- Passenger terminals: 4

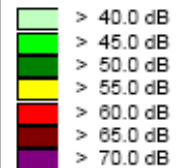


# Noise Monitoring at Old City Harbour

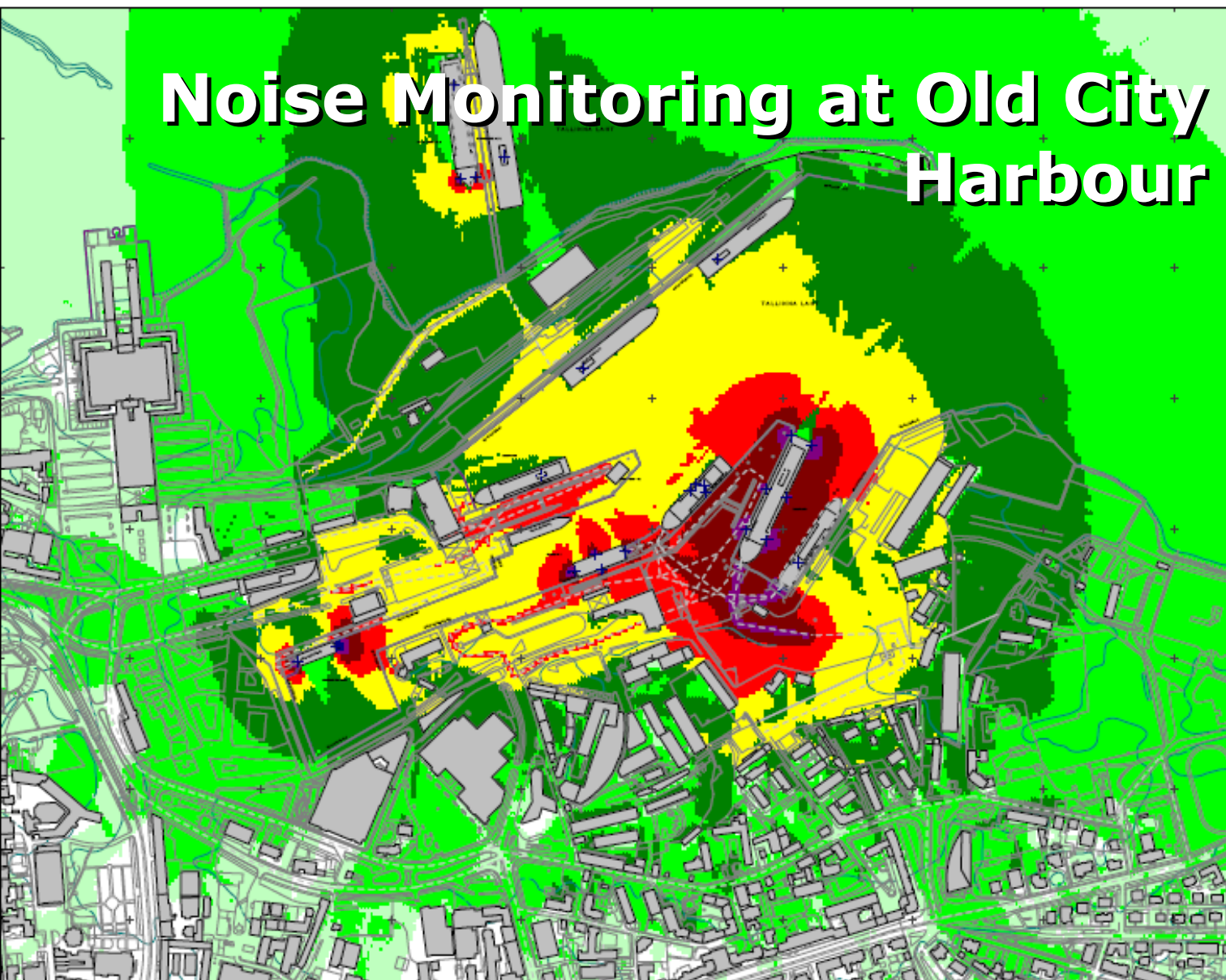
Tallinna vanasadam  
Keskconnamüra uuring

Laevade tegevusest  
põhjustatud müratasemed:

Hinnatud müratase  $L_d$   
Päev [kl 7-23]



Mõõtkava:  
1:8000



AKUCON

Akukon Eesti  
BG/29.09.2006

Geomeetria 2.0 (Harko), 2001 Tallinn 1.0 suunavik



# Old City Harbour Development





# PORT OF TALLINN

the port that ships love

